



GEARHEADS Frame size 61mm sq. (2.4 in. sq.)

METAL TYPE & BALL BEARING TYPE

▶ **RATED TORQUE OF GEARHEAD**

MODEL	Synchronous Speed		500	300	200	120	100	60	50	30	20	15	10	9	
	Ratio	Speed	50Hz	3	5	7.5	12.5	15	25	30	50	75	100	150	166.7
L6HD□M	High	kg-cm	60Hz	3.6	6	9	15	18	30	36	60	90	120	180	200
	Low		1.2	2.0	3.0	5.1	6.1	9.1	11.0	16.5	24.8	30	30	30	
L6HD□B	High	N-m	High	0.12	0.20	0.30	0.50	0.60	0.89	1.07	1.62	2.43	2.94	2.94	2.94
	Low		0.10	0.17	0.25	0.42	0.50	0.75	0.90	1.36	2.04	2.72	2.94	2.94	
	High	oz-in	High	17	28	42	70	84	127	152	229	344	417	417	417
	Low		14	24	35	59	71	106	128	192	289	385	417	417	

- * The normal torque is that the motor and gearhead are directly coupled.
- * Insert the denominator of reduction ratio in □ of gearhead model name.
- * Actual rotation speed is 2~15% less than synchronous speed.
- * ■Color indicates that the rotation of gearhead shaft is in opposite direction as output shaft of motor.

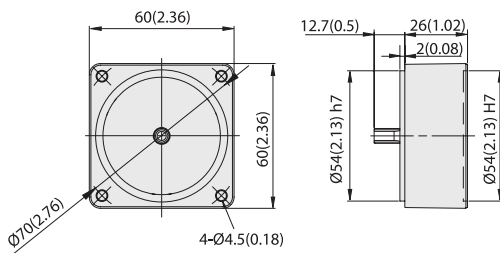
SPEED CONTROL
REVERSIBLE MOTORS

DIMENSIONS

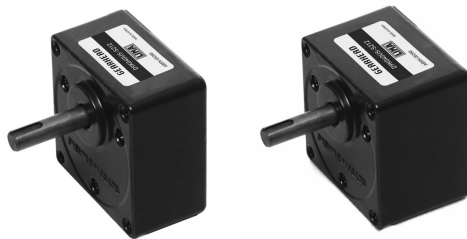
Unit : mm(inch)

DECIMAL GEARHEAD

L6G10D

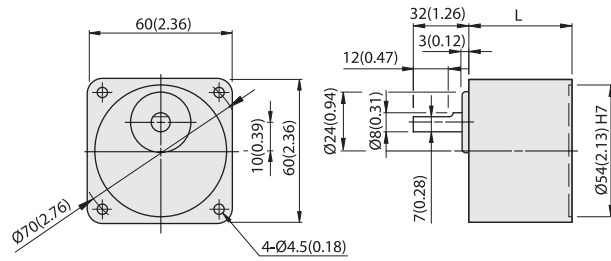


WEIGHT 0.2kg(0.44 lb)



GEARHEAD

L6HD□M(B)



GEAR RATIO	L		WEIGHT		BOLT
	mm	in	kg	lb	
1/3~1/18	30	1.18	0.3	0.66	M4x50
1/20~1/200	41	1.57	0.4	0.88	M4x60

L6HD□M(B) + L6R6P□LT

